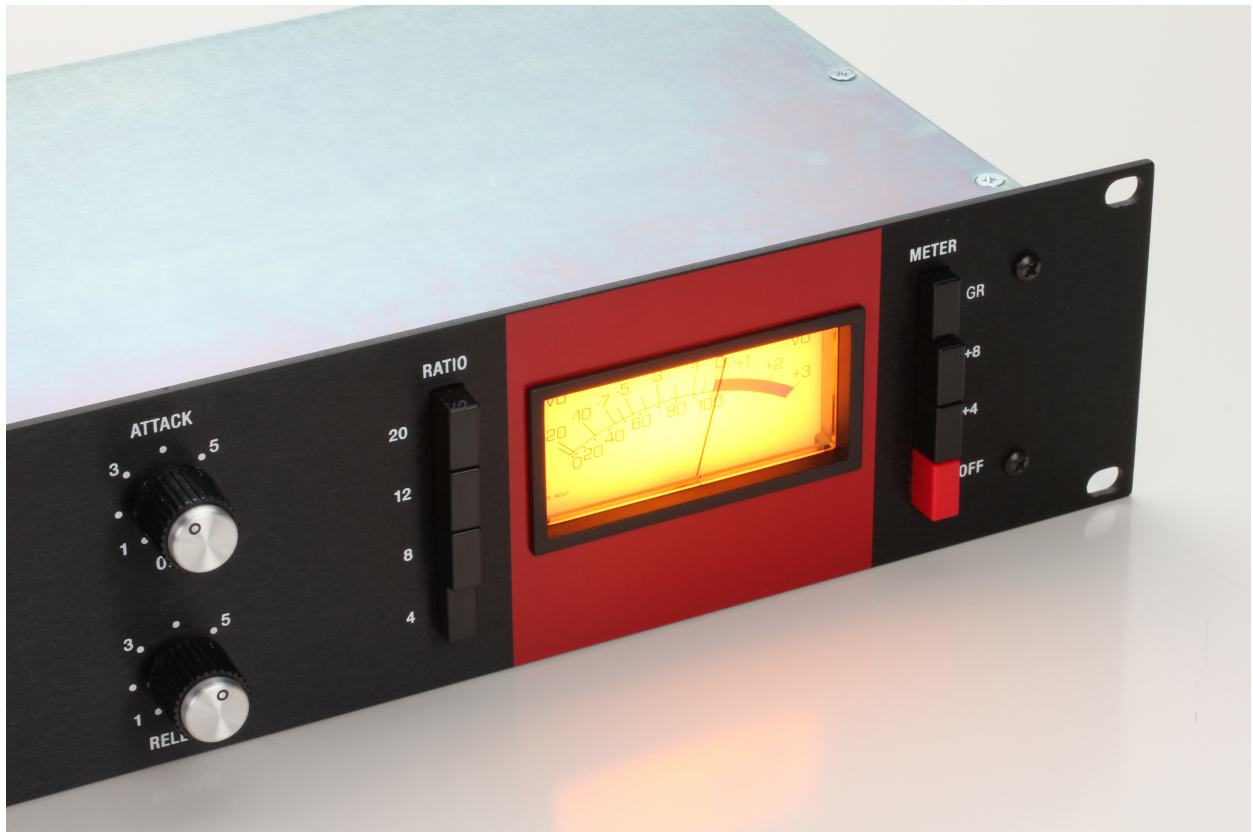
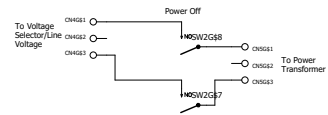
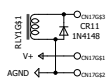
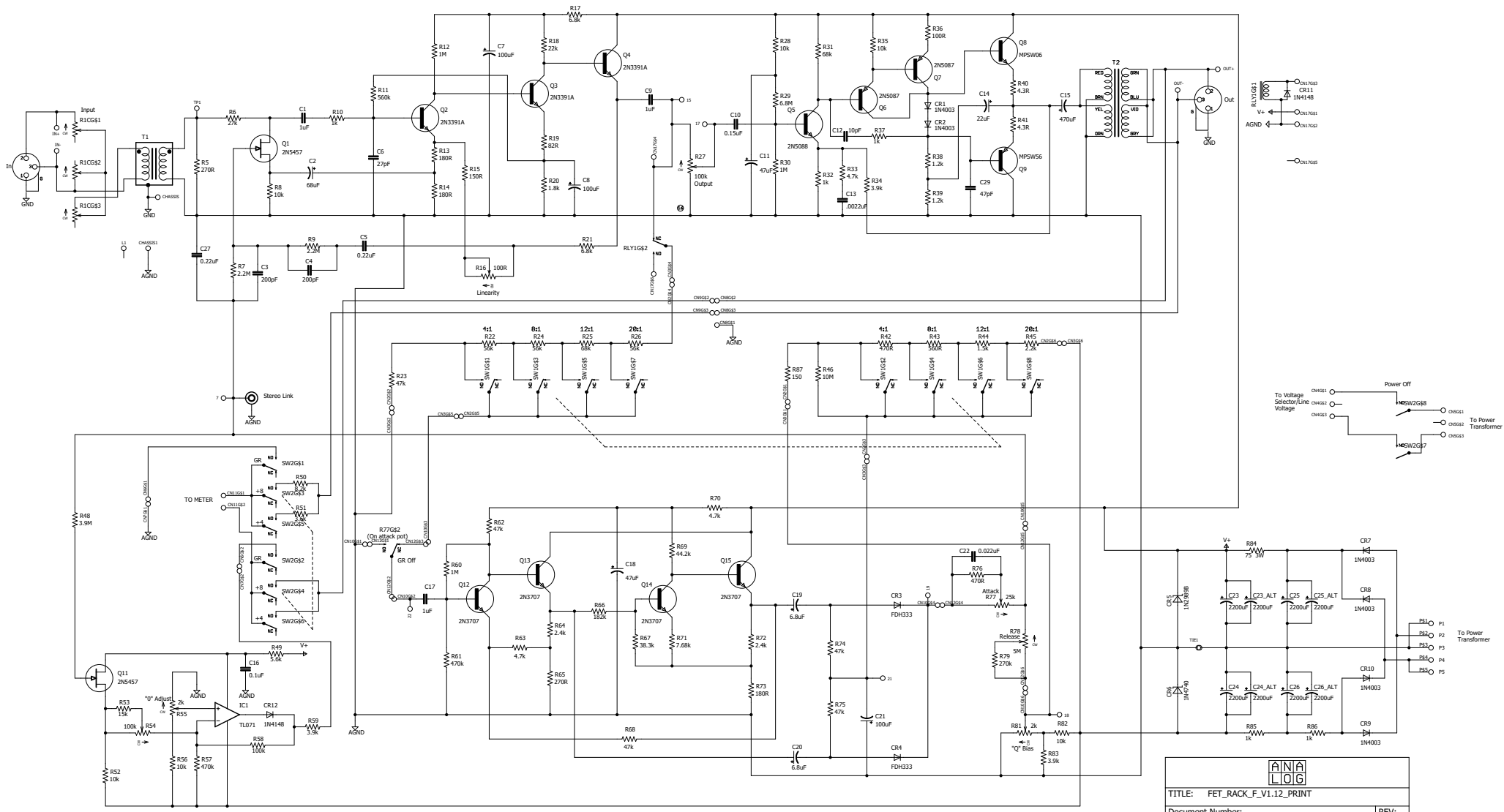




アナログ



FET/RACK F Limiter  
Main PCB Overlay, Schematic and Bill of Materials



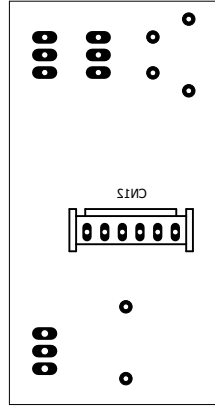
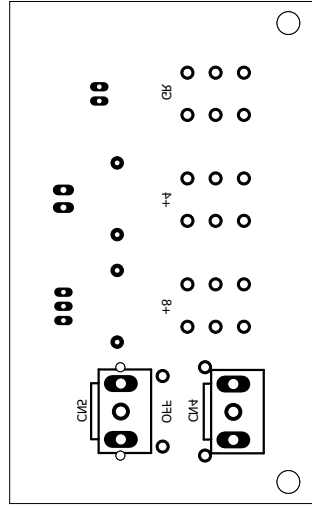
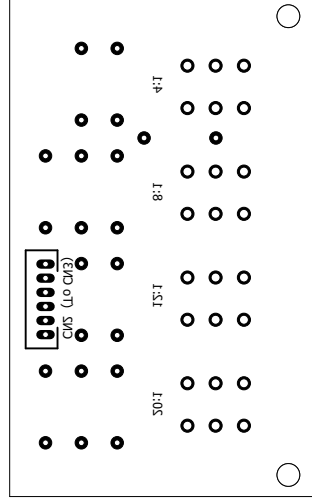
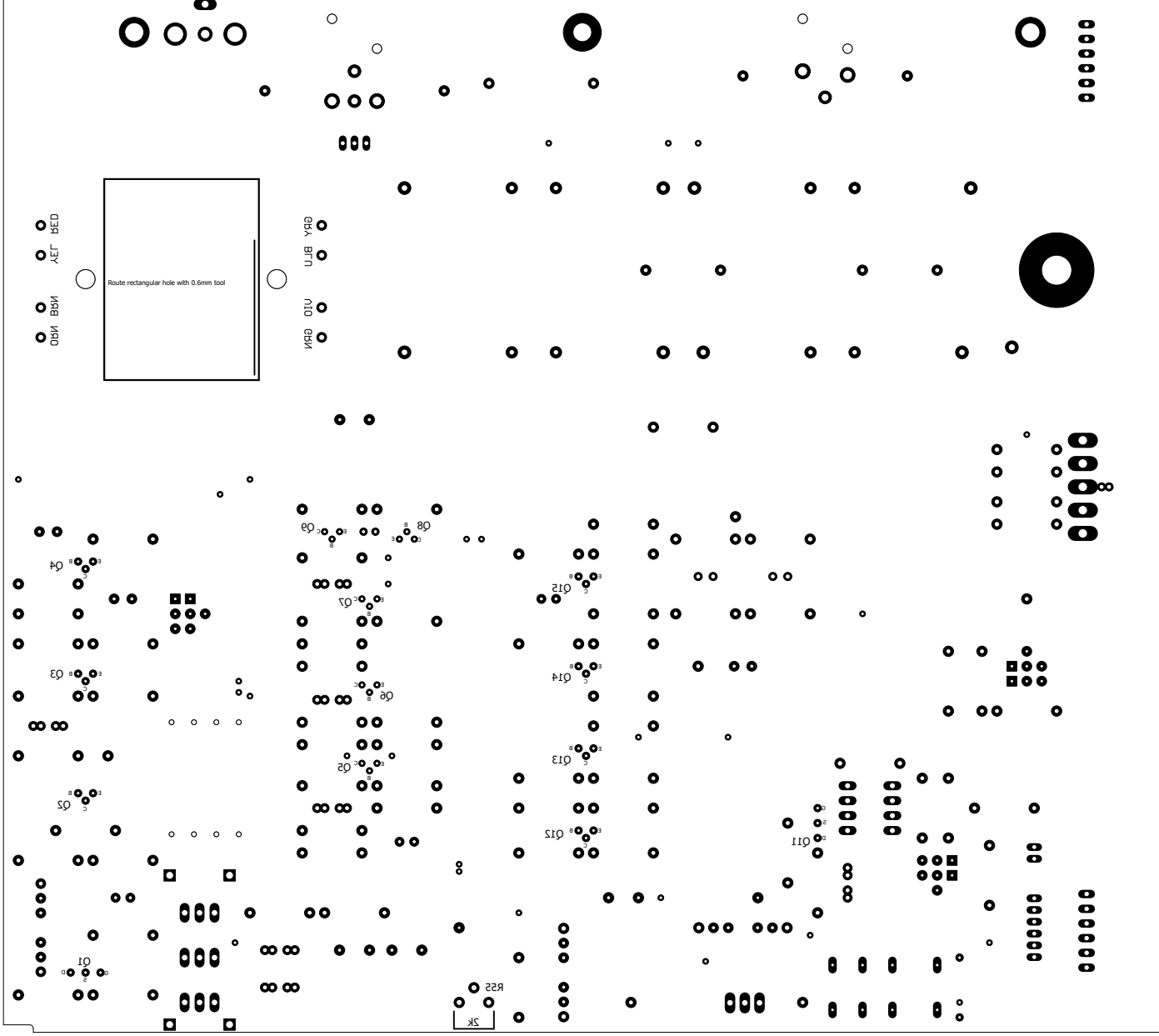
**AINA LOG**

TITLE: FET\_RACK\_F\_V1.12\_PRINT

Document Number: \_\_\_\_\_ REV: \_\_\_\_\_

Date: not saved! Sheet: 1/1





## FET/RACK Rev F Bill of Materials

Quantity	Part	Value	Part Number	Description	Package	Notes
2	C1, C9	1uF		Capacitor, Film	CAP_FILM_6X17.5_VAR_PITCH	
1	C2	68uF		Radial Electrolytic Capacitor	RAD6.3/2.5	
2	C3, C4	200pF		Capacitor, Ceramic	CAP1-2	
2	C5, C27	0.22uF		Capacitor, Film	CAP_FILM_5X7.2	
1	C6	27pF		Capacitor, Ceramic	CAP1-2	
3	C7, C8, C21	100uF		Radial Electrolytic Capacitor	RAD8/3.5	
1	C10	0.15uF		Capacitor, Film	CAP_FILM_6X17.5_VAR_PITCH	
2	C11, C18	47uF		Radial Electrolytic Capacitor	RAD6.3/2.5	
1	C12	10pF		Capacitor, Ceramic	CAP2	
1	C13	.0022uF		Capacitor, Ceramic	CAP2	
1	C14	22uF		Radial Electrolytic Capacitor	RAD5/2	
1	C15	470uF		Radial Electrolytic Capacitor	RAD12.5/5	
1	C16	0.1uF		Capacitor, Film	CAP2	
1	C17	1uF		Capacitor, Film	CAP_FILM_5X7.2	
2	C19, C20	6.8uF		Capacitor, Tantalum	CAP1_POL	
1	C22	0.022uF		Capacitor, Film	CAP2_RECT	
1	C25	2200uF/50V		Axial Electrolytic Capacitor	CAP_AXIAL_18X41	
OPT	C25_ALT	2200uF/50V		Radial Electrolytic Capacitor	RAD16/7.5	Alternative Radial Package
OPT	C23_ALT, C24_ALT, C26_ALT	2200uF/40V		Radial Electrolytic Capacitor	RAD16/7.5	Alternative Radial Package
3	C23, C24, C26	2200uF/40V		Axial Electrolytic Capacitor	CAP_AXIAL_18X38	
1	C29	47pF		Capacitor, Ceramic	CAP2	
6	CR1, CR2, CR7, CR8, CR9, CR10		1N4003	Diode	DO-35-0.4	1N4004-7 OK
2	CR3, CR4		FDH333	Diode, Low Leakage	DO-35-0.4	
1	CR5		1N2989B	Diode, Zener Power	DO4	
1	CR6		1N4740	Diode, Zener	DO-35-0.4	
2	CR11, CR12		1N4148	Diode	DO-35-0.4	
1	IC1		TL071	TL071	DIP-8	Single Op Amp
2	Q1, Q11		2N5457	Transistor, Field Effect	TO-92_INLINE	Use Socket
3	Q2, Q3, Q4		2N3391A	Transistor, Bipolar	TO-92	
1	Q5		2N5088	Transistor, Bipolar	TO-92	
2	Q6, Q7		2N5087	Transistor, Bipolar	TO-92	
1	Q8		MPSW06	Transistor, Bipolar	TO-92	
1	Q9		MPSW56	Transistor, Bipolar	TO-92	
4	Q12, Q13, Q14, Q15		2N3707 or 3708	Transistor, Bipolar	TO-92	Hfe 250 or Greater
1	R1C	600 Ohm nominal		T-Pad	P260-180A	
1	R27	100k		Potentiometer, Log Taper	P260_1/4"	
1	R77	25k		Potentiometer w/Switch	P260S-D1	
1	R78	5M		Potentiometer	P260_1/4"	
2	R5, R65	270R		Resistor, Metal Film	MF1/4	
1	R6	27k		Resistor, Metal Film	MF1/4	
2	R7, R9	2.2M		Resistor, Metal Film	MF1/4	
6	R8, R28, R35, R52, R56, R82	10k		Resistor, Metal Film	MF1/4	
3	R10, R32, R37	1k		Resistor, Metal Film	MF1/4	
1	R11	560k		Resistor, Metal Film	MF1/4	
3	R12, R30, R60	1M		Resistor, Metal Film	MF1/4	
3	R13, R14, R73	180R		Resistor, Metal Film	MF1/4	
2	R15, R87	150R		Resistor, Metal Film	MF1/4	R87 Ratio PCB
2	R17, R21	6.8k		Resistor, Metal Film	MF1/4	
1	R18	22k		Resistor, Metal Film	MF1/4	
1	R19	82R		Resistor, Metal Film	MF1/4	
1	R20	1.8k		Resistor, Metal Film	MF1/4	
3	R22, R24, R26	56k		Resistor, Metal Film	MF1/4	Ratio PCB
5	R23, R62, R68, R74, R75	47k		Resistor, Metal Film	MF1/4	R23 Ratio PCB
2	R25, R31,	68k		Resistor, Metal Film	MF1/4	R25 Ratio PCB
1	R29	6.8M		Resistor, Metal Film	MF1/4	
2	R33, R63	4.7k		Resistor, Metal Film	MF1/4	
3	R34, R59, R83	3.9k		Resistor, Metal Film	MF1/4	
1	R36	100R		Resistor, Metal Film	MF1/4	
2	R38, R39	1.2k		Resistor, Metal Film	MF1/4	
2	R40, R41	4.3R		Resistor, Metal Film	MF1/4	
2	R42, R76	470R		Resistor, Metal Film	MF1/4	R42 Ratio PCB, R76 Attack/Release PCB
1	R43	560R		Resistor, Metal Film	MF1/4	Ratio PCB
1	R44	1.5k		Resistor, Metal Film	MF1/4	Ratio PCB
1	R45	2.2k		Resistor, Metal Film	MF1/4	Ratio PCB
1	R46	10M		Resistor, Metal Film	MF1/4	Ratio PCB
1	R48	3.9M		Resistor, Metal Film	MF1/4	
1	R49	5.6k		Resistor, Metal Film	MF1/4	
1	R50	8.2k		Resistor, Metal Film	MF1/4	Meter PCB
1	R51	3.6k		Resistor, Metal Film	MF1/4	Meter PCB
1	R53	15k		Resistor, Metal Film	MF1/4	
2	R57, R61	470k		Resistor, Metal Film	MF1/4	
1	R58	100k		Resistor, Metal Film	MF1/4	
2	R64, R72	2.4k		Resistor, Metal Film	MF1/4	
1	R66	182k		Resistor, Metal Film	MF1/4	
1	R67	38.3k		Resistor, Metal Film	MF1/4	
1	R69	44.2k		Resistor, Metal Film	MF1/4	
1	R70	4.7k		Resistor, Metal Film	MF1/4	
1	R71	7.68k		Resistor, Metal Film	MF1/4	

1	R79	270k		Resistor, Metal Film	MF1/4	Attack/Release PCB
1	R84	75 3W		Resistor, Power	MF-3W	
2	R85, R86	1k		Resistor	MF1/2	
1	R16	100R	3386F-1-101LF	Potentiometer, Trimmer	3386_TOP	
1	R54	100k	3386F-1-104LF	Potentiometer, Trimmer	3386_TOP	
1	R55	2k	3306K-1-202	Potentiometer, Trimmer	3306	
1	R81	2k	3386F-1-202LF	Potentiometer, Trimmer	3386_TOP	
1	RCA1		161-0390-E	RCA Jack		
1	RLY1		V23105A5305A201	Relay DPDT		
1	SW1		PBN-4	Switch Bank	PBN-4	
1	SW2		PBN-4-15T	Switch Bank	PBN-4-15T	
1	T1		C-3837-1	Audio Input Transformer	C-3837-1	
1	T2		EA11148	Audio Output Transformer	EA11148	
1	XLR1		NC3MAH	XLR Male	NC3MAH	
1	XLR2		NC3FAH1	XLR Female	NC3FAH1	
1			695-1B	Heat Sink		For CR5
1	CN1		B5PS-VH	Top Entry Shrouded Header	B5PS-VH	
2	CN2, CN3		B6B-PH-K-S	Top Entry Shrouded Header	B6B-PH-K-S	
2	CN4, CN5		B3P-VH	JST VH Series	B3P-VH	
2	CN6, CN7		B2B-PH-K-S	Top Entry Shrouded Header	B2B-PH-K-S	
2	CN8, CN9		B3B-PH-K-S	Top Entry Shrouded Header	B3B-PH-K-S	
2	CN10, CN17		S6B-XH-A-1	Side Entry Recepticle	S6B-XH-A-1	
1	CN11		B2B-XH-A	Top Entry Shrouded Header	B2B-XH-A	
1	CN12		06JQ-BT	Top Entry Recepticle	06JQ-BT	